



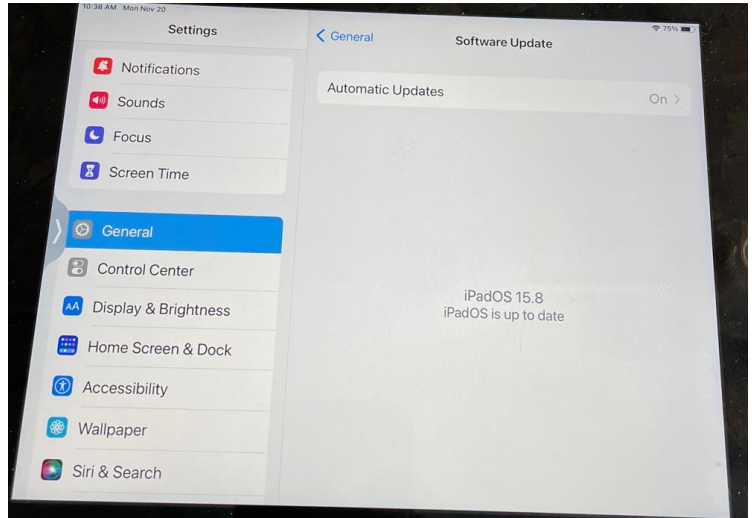
# iOS Guide

## Compass Control Compatibility

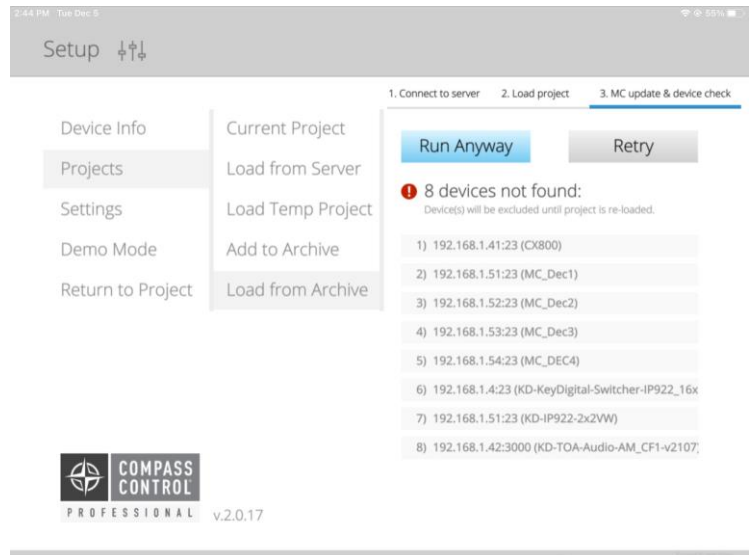
Valued Compass Control Customer,

Unfortunately, due to iOS updates regarding network functionality and OS obsolescence, iPads running iOS version 15.x and prior are no longer capable of running Compass Control. All later iOS versions are known to be compatible at this time.

When attempting to update the iOS version of your iPad, you will see there are no further updates available for the iPad, which is an indicator that the iPad is no longer compatible with Compass Control.



Another indicator of the iPad being incompatible, is that when updating the Master Controller(s) with the project, the iPad will not find the Master Controller. However, iPads running newer iOS versions will have no problem.



Lastly, if you proceed to the control UI, you will see Device Error messages at the top-center of the UI as you attempt to control your system. The error message includes the IP address of the Master Controller(s) within your system.

