



KD-MS4x4G / KD-MS8x8G

4x4/8x8 4K/18G HDMI Matrix Switchers with Independent Audio Switching, Balanced/Unbalanced Audio, Audio De-embedding of Analog L/R/PCM

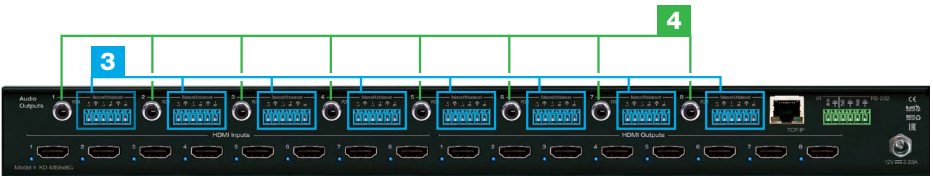
QUICK SETUP GUIDE

CONNECT

Begin with the KD-MS4x4G/KD-MS8x8G unit and all input/output devices turned off.



1. Connect HDMI sources to the input ports of KD-MS4x4G/KD-MS8x8G unit
2. Connect HDMI displays to the output ports of KD-MS4x4G/KD-MS8x8G unit



3. Connect the analog audio outputs to amplifiers/receivers via the analog 6-pin phoenix terminals
4. Connect the digital audio outputs to amplifiers/receivers via the PCM outputs



5. Connect control system and/or PC to TCP/IP, RS-232, Serial IR port or IR sensor
6. Screw-in the power supply to the KD-MS4x4G/KD-MS8x8G, then, plug-in to power outlet
7. Power on input/output devices

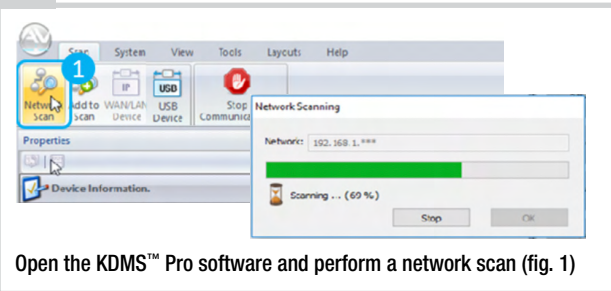
CONFIGURE

Configure and control your KD-MS4x4G/KD-MS8x8G units via **Key Digital Management Software™ Pro (KDMS™ Pro)** that can be downloaded here: <https://goo.gl/ZcyHui>

1

Connect to your unit via TCP/IP port using default static IP address **192.168.1.239**, port 23 to a 192.168.1.xxx type network or set your PC to a static IP address of 192.168.1.xxx (excluding .239).

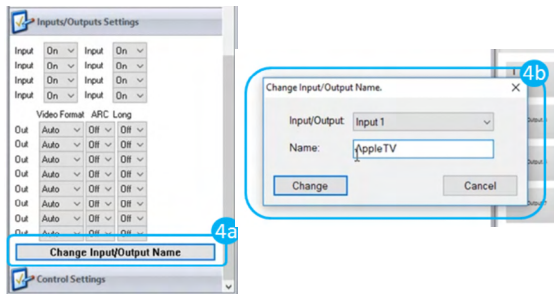
2



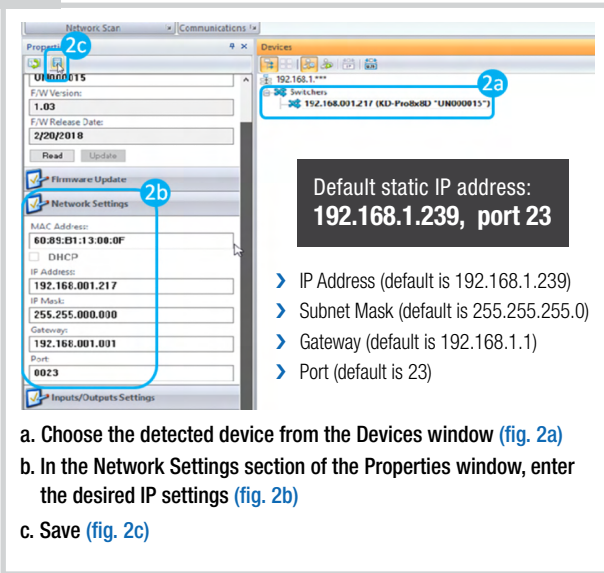
5

If using KD-App or KDMS™ for control, set the desired Input/Output names by entering the Input/Output Settings section of the properties window, and selecting the Change Input/Output Name button (fig. 4a), selecting the desired input/output and entering the name (fig. 4b)

Additional settings may be adjusted in the KDMS software. Full access to all settings/commands is achieved via terminal session using Tera Term or PuTTY software.

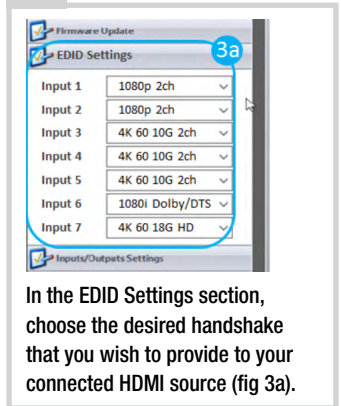


3



Your unit is now ready to control from the KDMS™ Control Panel, KD-App, or by professional control system.

4



KDMS™ Pro
Download Page

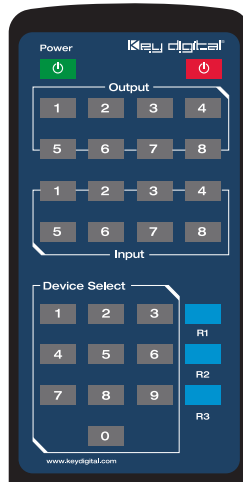


CONTROL

1

Option 1: Control via Remote Control

- **Matrix Switching – Video and Audio together**
 - » IR Button Sequence = X, Y
 - » X = Output # [1-8], Y = Input # [1-8]
- **Matrix Switching – Video ONLY**
 - » IR Button Sequence = R1, X, Y
 - » X = Output # [1-8], Y = Input # [1-8]
- **Matrix Switching – Audio ONLY**
 - » IR Button Sequence = R2, X, Y
 - » X = Output # [1-8], Y = Input # [1-8]
- **Assign EDID Handshake to Input from Unit's EDID Table (see manual)**
 - » IR Button Sequence = R2, R1, R3, Y, ZZ
 - » Y = Input # [1-8], ZZ = Device Select # [01-15]



2

Option 2: Control via KD-App, Key Digital Management Software™

KD-MS4x4G/KD-MS8x8G are controllable by:

1. Key Digital's user-friendly iOS App (App Store: <https://goo.gl/k5SDyM>) or
2. Key Digital Management Software™ (Key Digital website: <https://goo.gl/Kge2LH>).

Configuration Steps:

- » Connect and Configure you KD-MS4x4G/KD-MS8x8G as described in this Quick Setup Guide.
- » Download and open KD-App and/or KDMS™
- » Ensure the iOS device and/or PC computer are on the same network with KD-MS4x4G/KD-MS8x8G
- » Perform a network scan in the KD-App/KDMS™
- » Select and control the selected KD-MS4x4G/KD-MS8x8G
- » If desired, the KD-App allows users to create presets for KD-MS4x4G/KD-MS8x8G's current input-output selections.

Key Digital® App
on the App Store

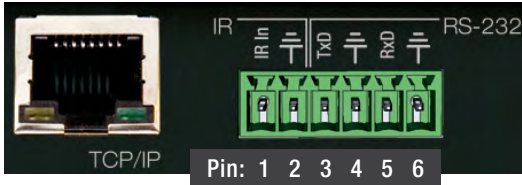


KDMS™
Download Page



3 Option 3: Control via professional control system

KD-MS4x4G/KD-MS8x8G allows control over serial interface for bi-directional communication.



Connection Protocol:

- > Baud Rate = 57,600 bits per second
- > Data Bits = 8
- > Stop Bits = 1
- > Parity = Non
- > Flow Control = None
- > Carriage Return: Required at end of string

- > Use pins 3, 4, and 5 for RS-232 communication.
- > For TCP/IP control, the **default IP address is 192.168.1.239, with port 23**
- > Most Key Digital matrix switches support a standard audio+video switching command. KD-MS4x4G/KD-MS8x8G is also controllable by this command, so if you have previously integrated Key Digital matrixes by third-party control systems you may have success using the same driver/module.

Matrix Switching – Video + Audio together

SPOxxSlyy xx = output number (01-04 / 01-08), yy = input number (01-04 / 01-08)

Matrix Switching – HDMI only

SPOxxSByy xx = output number (01-04 / 01-08), yy = input number (01-04 / 01-08)

Matrix Switching – Audio only

SPOxxSAyy xx = output number (01-04 / 01-08), yy = input number (01-04 / 01-08)

⚠ IMPORTANT PRODUCT WARNINGS ⚠

- > Connect all cables before providing power to the unit.
- > Test for proper operation before securing unit behind walls or in hard to access spaces.
- > You **MUST** use the Power Supply provided with your unit or you **VOID** the Key Digital® Warranty and risk damage to your unit and associated equipment.



[KD-MS4x4G](#)

Visit product pages for most recent version of the manual, quick setup guide, firmware, control drivers and all additional downloads.



[KD-MS8x8G](#)