



KD-DA2x4G / KD-DA2x8G

2x4/2x8 4K/18G POH/HDBT/HDMI Distribution Amplifier/
Switcher with Audio De-Embedding
(Includes KIT 4/8Rx 100 Meters Extenders)

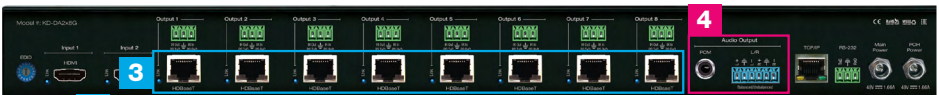
QUICK SETUP GUIDE

CONNECT

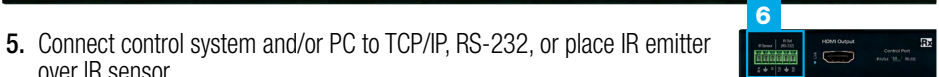
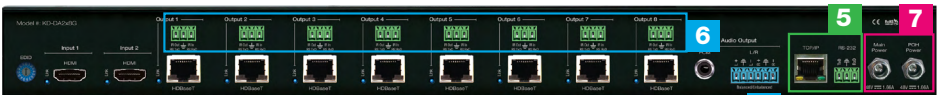
Begin with the KD-DA2x4G/KD-DA2x8G unit and all input/output devices turned OFF.



1. Connect HDMI sources to the input ports of KD-DA2x4G/KD-DA2x8G unit
2. Connect HDMI displays to the output ports of KD-XDALRx units



3. Connect CAT wires from KD-DA2x4G/KD-DA2x8G's HDBaseT outputs to KD-XDALRx HDBaseT input.
4. Connect analog or digital audio outputs to audio system



5. Connect control system and/or PC to TCP/IP, RS-232, or place IR emitter over IR sensor.
6. To control connected monitors, connect IR/RS-232 pass-thru wiring from control system into pass-thru ports and from KD-XDALRx to controlling displays
7. Screw-in both power supplies to the KD-DA2x4G/KD-DA2x8G's unit, and then connect power to outlets.
8. Power on HDMI sources and displays

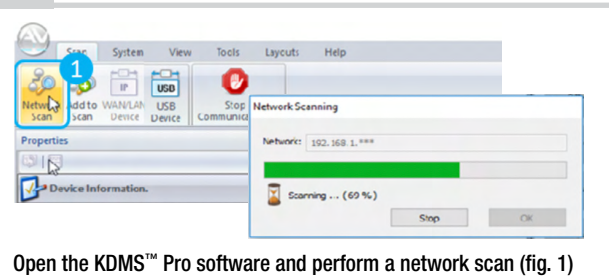
CONFIGURE

Configure and control your KD-DA2x4G/KD-DA2x8G units via **Key Digital Management Software™ Pro (KDMS™ Pro)** that can be downloaded here: <https://goo.gl/ZcyHui>

1

Connect to your unit via TCP/IP port using default static IP address **192.168.1.239**, port 23 to a 192.168.1.xxx type network or set your PC to a static IP address of 192.168.1.xxx (excluding .239).

2

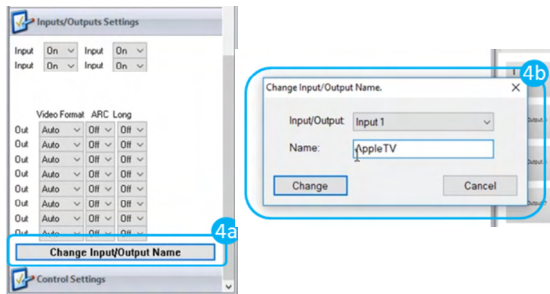


Open the KDMS™ Pro software and perform a network scan (fig. 1)

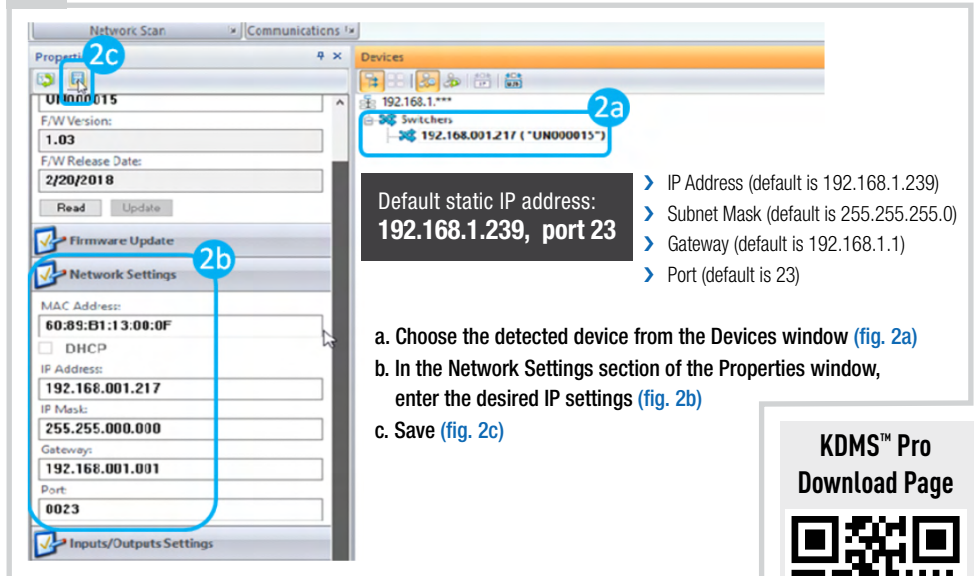
4

If using KD-App or KDMS™ for control, set the desired Input/Output names by entering the Input/Output Settings section of the properties window, and selecting the Change Input/Output Name button (fig. 4a), selecting the desired input/output and entering the name (fig. 4b)

Additional settings may be adjusted in the KDMS software. Full access to all settings/commands is achieved via terminal session using Tera Term or PuTTY software.



3



Default static IP address: **192.168.1.239**, port 23

- IP Address (default is 192.168.1.239)
- Subnet Mask (default is 255.255.255.0)
- Gateway (default is 192.168.1.1)
- Port (default is 23)

- Choose the detected device from the Devices window (fig. 2a)
- In the Network Settings section of the Properties window, enter the desired IP settings (fig. 2b)
- Save (fig. 2c)

Your unit is now ready to control from the KDMS™ Control Panel, KD-App, or by professional control system.

KDMS™ Pro
Download Page

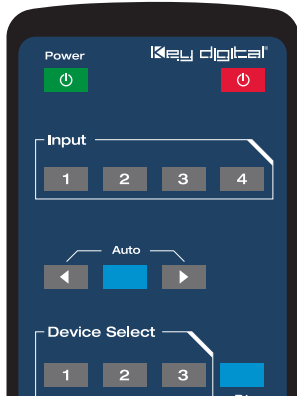


CONTROL

1

Option 1: Control via Remote Control

➤ Switching – Use Input button



2

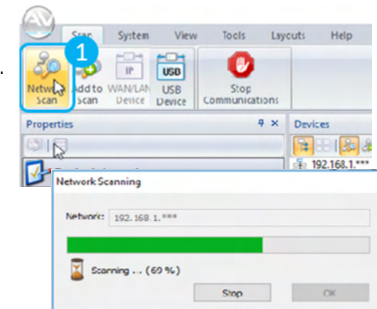
Option 2: Control via KD-App, or Key Digital Management Software™ (KDMS™)

KD-DA2x4G/KD-DA2x8G are controllable by:

- Key Digital's user-friendly iOS App (FREE Download on the App Store: <https://goo.gl/k5SDyM>) or
- Key Digital Management Software™ Pro (Key Digital website: <https://goo.gl/Kge2LH>).

Configuration Steps:

- » Connect and Configure you KD-DA2x4G/KD-DA2x8G as described in this Quick Setup Guide.
- » Download and open KD-App and/or KDMS™
- » Ensure the iOS device and/or PC computer are on the same network with KD-DA2x4G/KD-DA2x8G
- » Perform a network scan in the KD-App/KDMS™
- » Select and control the selected KD-DA2x4G/KD-DA2x8G
- » If desired, the KD-App allows users to create presets for KD-DA2x4G/KD-DA2x8G's current input-output selections.



Key Digital® App
on the App Store

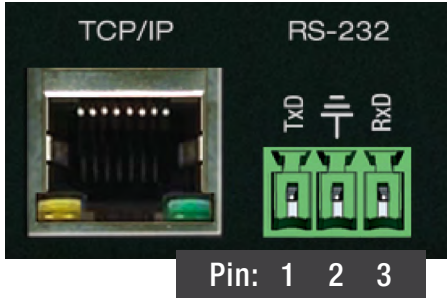


KDMS™
Download Page



3 Option 3: Control via professional control system

KD-DA2x4G/KD-DA2x8G allows control over serial interface for bi-directional communication.



Default static IP address:
192.168.1.239, port 23

Connection Protocol:

- › Baud Rate = 57,600 bits per second
- › Data Bits = 8
- › Stop Bits = 1
- › Parity = Non
- › Flow Control = None
- › Carriage Return: Required at end of string

- › For RS-232 control use pins 1, 2, and 3 of the Main Control port.
- › For TCP/IP control, the **default IP address is 192.168.1.239, with port 23**
- › Most Key Digital matrix switches support a standard audio+video switching command. KD-DA2x4G/KD-DA2x8G is also controllable by this command, so if you have previously integrated Key Digital matrixes by third-party control systems you may have success using the same driver/module.

Switching – Video + Audio together (two commands supported)

SPO01Slyy	yy = input number (01-02)
SPOSlyy	yy = input number (01-02)

⚠ IMPORTANT PRODUCT WARNINGS ⚠

- › Connect all cables before providing power to the unit.
- › Test for proper operation before securing unit behind walls or in hard to access spaces.
- › You **MUST** use the Power Supply provided with your unit or you **VOID** the Key Digital® Warranty and risk damage to your unit and associated equipment.



[KD-DA2x4G](#)

Visit product pages for most recent version of the manual, quick setup guide, firmware, control drivers and all additional downloads.



[KD-DA2x8G](#)